



Farndale Cottage, Pickering ★★★★★ Gold

Sleeps 2



This ground level, open plan cottage has no steps and it is designed with wide doors, walk-in shower and other features which gives this cottage a level 2ⁱ mobility rating. This cottage has real character with beams, a wood burning stove and lovely big bay window. We have a range

of accessible equipment available including a wheelchair, shower stool and toilet seat raiser.

ⁱ Level 2 mobility is typically suitable for a person with restricted walking ability and for those that may need to use a wheelchair some of the time.

Bedrooms	1
Bathrooms	1
Price Band	A
Garden	Open
Pets	No
Parking	Off Road
Wi-fi	Free
Heating	Gas
One Level	Yes
Fire	Log
Changeover	Friday

Accommodation

Ground Floor

Lounge:	Open plan living area. The beamed lounge area has a wood burning stove ideal to cosy up on the sofas on a chilly autumn or winter night. High quality furnishings with reclining arm chair. Equipped with 43" LED TV including full Netflix subscription, DVD Recorder, and Hi-Fi.
Dining Area:	The light oak dining table is located in the lovely spacious bay window. There is plenty of good quality crockery, cutlery and glassware.
Kitchen Area:	The fully fitted kitchen is very well equipped, including dishwasher, microwave, toaster, kettle and electric cooker with ceramic hob. We provide a good range of cooking utensils.
Bedroom:	The bedroom is very spacious with a super-king size bed or split into two singles. It has a light oak wardrobe and dressing table. The room accommodates a cot.
Bathroom:	The lovely en-suite bathroom has a spacious walk in thermostatically controlled shower, W.C. and washbasin. A heated towel rail to keep the towels warm and dry plus handrails to help you in and out of the shower.

Outside

Garden:	Open garden area.
Patio:	Dedicated patio area table, chairs, and sun umbrella. A BBQ is available.
Outbuildings:	Laundry: room with washing machine, tumble dryer & freezer.
Parking:	The cottage is in a private courtyard shared with twelve other cottages. Off-road parking is available.

Restrictions

Dogs:	No pets in this cottage.
-------	--------------------------





Local Information

Shops:	Local shop 2 minutes walk.
Nearest Town:	Pickering town centre is 5 minutes walk, has extensive shopping including a small supermarket (Market day is Monday).
Public Transport:	Pickering is well served by bus routes, there is a bus stop within 100 yards of the cottage, we are happy to meet you and help with the luggage. Nearest rail station is in Malton 10 miles from Pickering.
Eating Out:	Pickering has many restaurants and takeaways most within easy walk of the cottages. There is a file in the cottage with sample menus for many local restaurants.
Places to visit and things to do:	We are within walking distance of the North Yorkshire Moors steam railway, Pickering Castle, Beck Isle Museum and the swimming pool. Pickering is on the edge of the North Yorkshire National Park, fantastic for walking or site seeing. Whitby and Scarborough on the coast are within an easy drive as is Castle Howard and a host of other historic properties.

Facilities

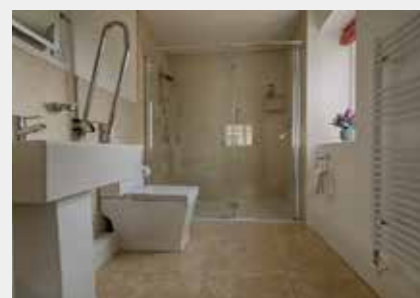
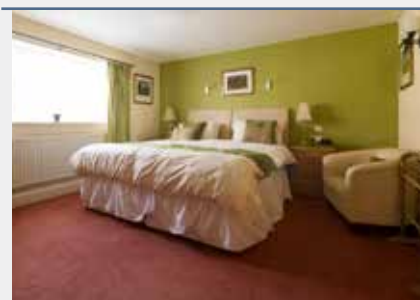
Linen:	Luxury duvets, pillows, bed linen, and towels; bath sheet and hand towels plus kitchen linen are provided. Blankets available on request.		
Fuel:	Price includes electric, gas central heating, coal, logs, and hot water. Heating and hot water is controllable in the cottage.		
Kitchen Equipment:	Electric Cooker Fridge Denby crockery Utensils	Microwave Toaster Cutlery	Electric Kettle Dishwasher Saucepans
Electronic:	43" LED TV with Netflix Hifi with CD and radio	DVD Recorder	Wi-fi enabled
Visitor Information:	Welcome file with an A-Z of useful information as well as a comprehensive tourist information folder with suggested itinerary, walks, events and places to visit plus an eating out guide.		
Extras:	All available on request: Cot Yes Highchair Yes Stair-gate Yes Daily Cleaning £10 Accessibility Equipment Yes Wheelchair Yes		
Office:	Our office in Pickering is open 9am-1pm Monday to Saturday for enquiries and information.		
Laundry:	Washing machine and tumble dryer in the on-site laundry room Clothes airer, iron and ironing board available.		
Cleaning Equipment:	Cleaning material and equipment, including a vacuum cleaner, are available in the cottage.		
Other Items:	Hairdryer Radio Alarm Clock	Books and games	Shaver Point
Welcome:	All guests are greeted on arrival with a site and cottage orientation. A complimentary tea and coffee tray is supplied with fresh milk. The cottage is thoroughly cleaned prior to your arrival. The normal arrival time is 2pm although you are welcome to arrive earlier and park up on site. Departure time is normally 10am on the day of departure.		

Weekly Prices 2018

From	To	Per Week
5 th Jan	- 8 th Feb	£350.00
9 th Feb	- 8 th Mar	£370.00
9 th Mar	- 29 th Mar	£385.00
30 th Mar	- 19 th Apr	£435.00
20 th Apr	- 26 th Apr	£420.00
27 th Apr	- 24 th May	£470.00
25 th May	- 31 st May	£520.00
1 st Jun	- 21 st Jun	£505.00
22 nd Jun	- 5 th Jul	£515.00
6 th Jul	- 19 th Jul	£520.00
20 th Jul	- 23 rd Aug	£530.00
24 th Aug	- 30 th Aug	£495.00
31 st Aug	- 20 th Sep	£470.00
21 st Sep	- 27 th Sep	£425.00
28 th Sep	- 4 th Oct	£400.00
5 th Oct	- 25 th Oct	£435.00
26 th Oct	- 16 th Dec	£380.00
17 th Dec	- 3 rd Jan	£465.00
4 th Jan	- 7 th Feb	£350.00

3 & 4 night breaks or 3 & 4 night extensions available all year.

Minimum stay 7 nights during peak season. Monday changeover available.



Note: No dogs in this cottage.

Availability and to book online visit www.eastgateg cottages.co.uk or call us on 01751 471310

YOUR RETREAT IN THE HEART OF NORTH YORKSHIRE